

Region C Water Planning

# **A Critical Process for North Central Texas' Future Prosperity and Quality of Life**

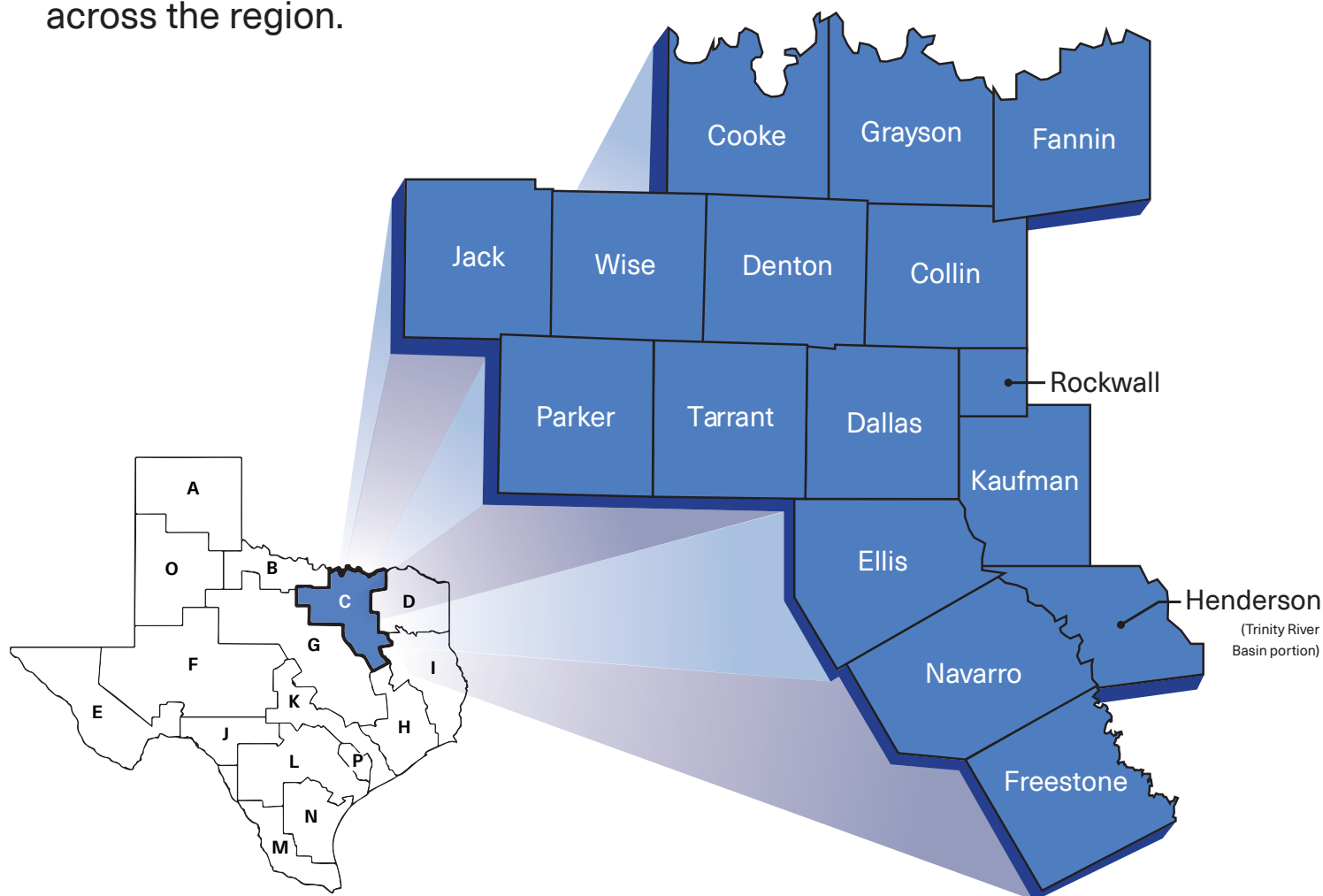


# The Purpose

The Region C Water Planning Group's work is essential to ensuring the future water supply for North Central Texas.

Without the development of significant new water supplies in the coming years, the residents, businesses and communities of Region C's 16 counties face potential water shortages and severe threats to their continued economic prosperity and quality of life.

Region C's draft 2026 Regional Water Plan (known as the Initially Prepared Plan, or IPP) is designed to address the water needs of our fast-growing region and ensure future water demands are met promptly based on the bottom-up input of water users across the region.



# The Basics

## Who is the Region C Water Planning Group?

The Region C Water Planning Group (RCWPG) is one of 16 regional water planning groups created by the Texas Water Development Board (TWDB) to help develop a comprehensive water plan for Texas through 2080. Each water planning group is responsible for preparing and adopting a regional water plan for its area.

## Where is Region C?

Region C covers all or part of 16 counties in North Central Texas, including Collin, Cooke, Dallas, Denton, Ellis, Fannin, Freestone, Grayson, Henderson (Trinity River Basin portion), Jack, Kaufman, Navarro, Parker, Rockwall, Tarrant and Wise.

## What does a Regional Water Planning Group do?

Every five years since 1997, Texas has developed a State Water Plan to address the state's growing water needs through a bottom-up, regionally driven planning process facilitated by Regional Water Planning Groups (RWPGs) across the state. The Region C Water Planning Group developed its first regional water plan in 2001 and produced updated plans in 2006, 2011, 2016 and 2021. The draft 2026 plan is now available for review and will be finalized this fall.

## What is the extent of an RWPG's powers?

RWPGs have many responsibilities, but a limited scope and authority. RWPGs have no enforcement or regulatory powers and no power to address permitting or implement projects. The bottom-up approach to the planning process was designed to focus RWPGs on identifying water needs (potential shortages) and feasible water management strategies to ensure adequate water supplies during drought.

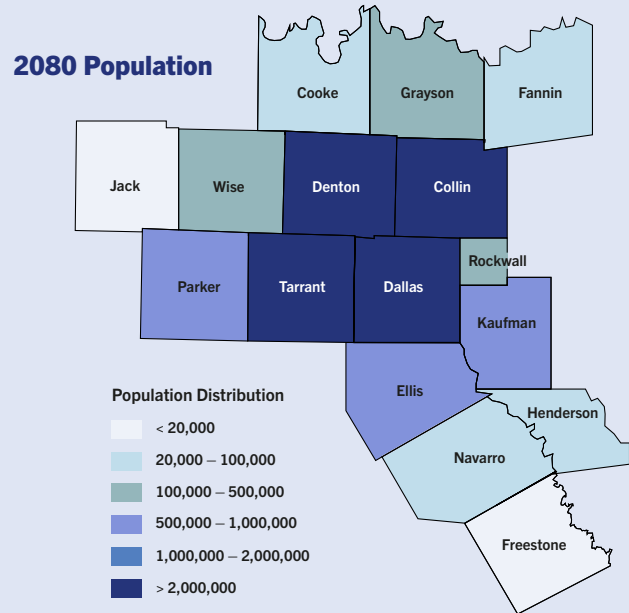
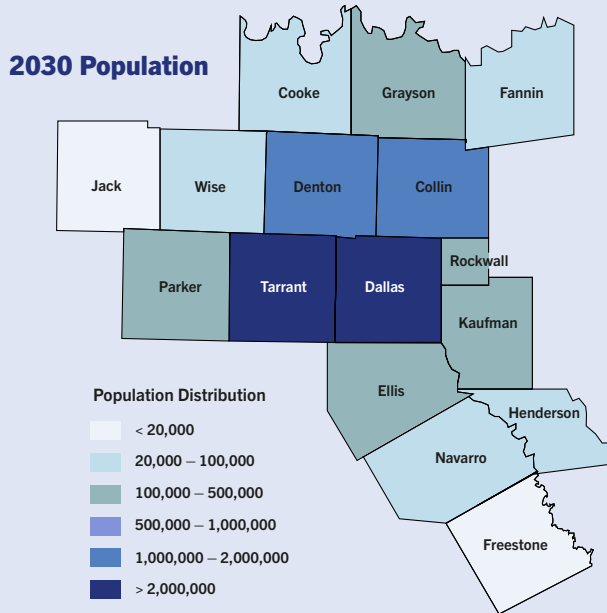
## Why is this planning effort crucial to our region?

Water is a major contributor to our regional quality of life and continued economic prosperity. Region C will face substantial water shortages shortly and over the coming five decades without additional water supplies. Over that time, the regional population will nearly double. Failing to meet the region's future water demands would create dire consequences.

# Why This Plan?

## 1

### Region C's rapid growth is outpacing current water supplies



**15.1M**

Region C's projected population by 2080. That's nearly double what it is today!

**≈120K**

New residents added each year until 2080

**>55%**

Regional water demand growth over the next 50 years

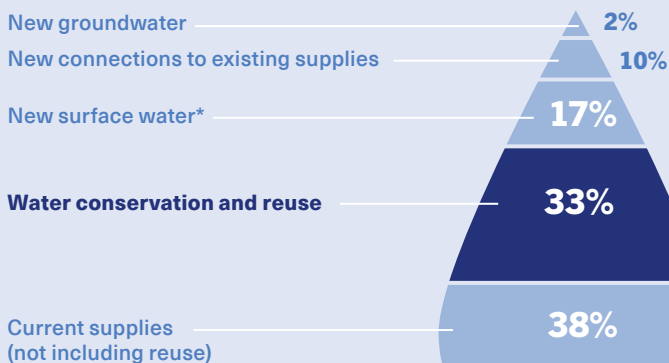
**1.3M**

Acre-feet of annual water shortage by 2080 unless we develop new supplies

## 2

### Strategic diversification of water supplies is essential

#### Where we will get our water in 2080



Region C is recommending more than 170 Water Management Strategies to meet regional water demand over the next 50 years

#### It's still not enough!

Conservation. Reuse. New connections. Existing water sources. They all work together, but no one strategy type alone is enough to meet Region C's future needs!

**4 < 25**

Only 4 new reservoirs are recommended in the new 50-year plan.

In the previous 60 years, there were over 25 reservoirs developed to supply Region C's water.

\*Includes 2 new on-channel reservoirs and 2 new off-channel reservoirs



## Region C shows how to be good stewards of Texas' water

Today, Region C is using less than its proportionate share.

**26%**

of Texas' population

**30%**

of Texas' economic activity

yet, currently **10%**  
of Texas' Annual Water Consumption



By 2030, we're planning...

**More municipal conservation**

than any other Texas region

**Nearly 3X more reuse**

supplies than any other Texas region

By 2080, we will be doing even more!

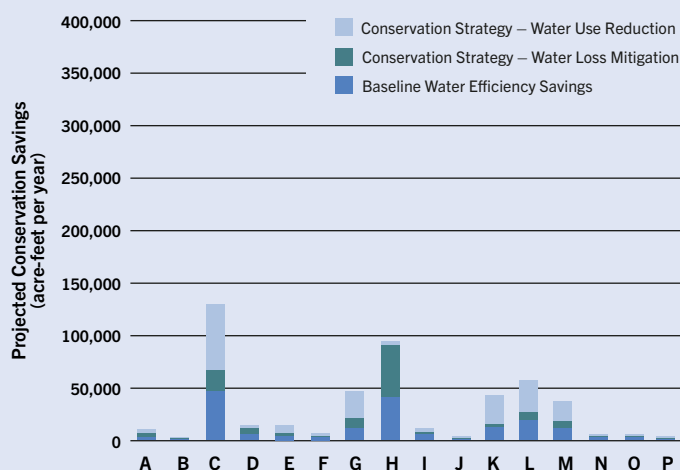
**45% of new supplies**

will be from conservation and reuse

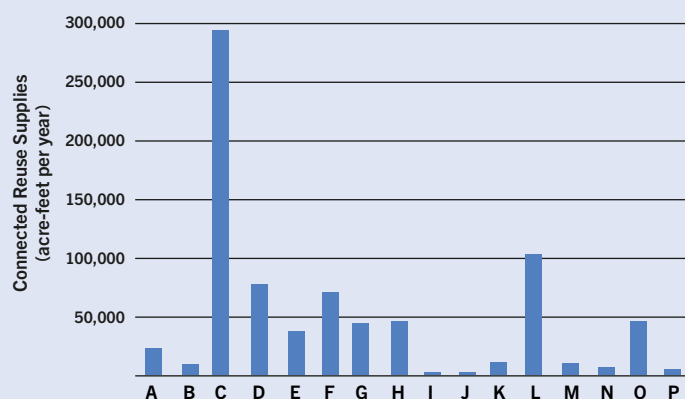
**Nearly 1/3**

of total supplies will be from conservation and reuse

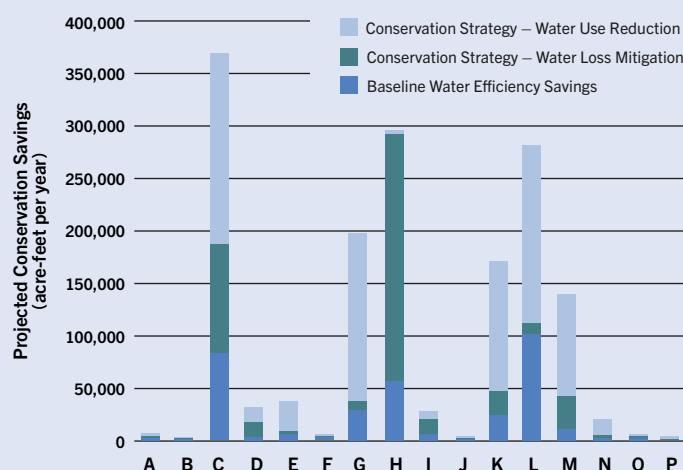
2030 Municipal Conservation by Region



2030 Existing Reuse by Region



2080 Municipal Conservation by Region



**Future reuse depends on other sources**

Reuse relies on development of other new supplies.

For water to be reused, you first must have water that can be reused.

# Know the Real Facts

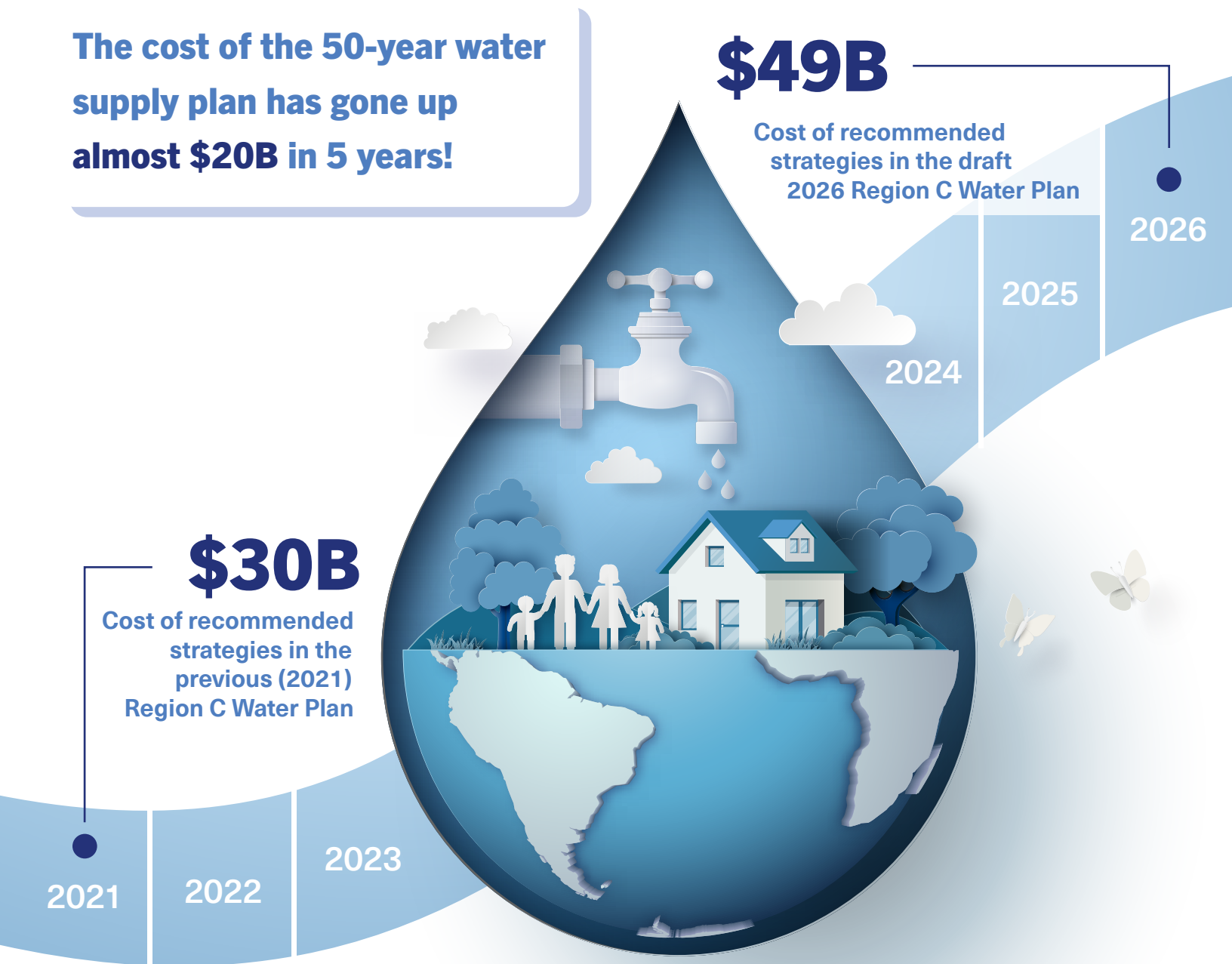
The cost of the 50-year water supply plan has gone up almost **\$20B** in 5 years!

**\$49B**

Cost of recommended strategies in the draft 2026 Region C Water Plan

**\$30B**

Cost of recommended strategies in the previous (2021) Region C Water Plan



**The cost of delayed planning  
or implementation is too great.**

**The time to act is now.**

# Does Region C use more than its “fair share” of water?

**Fact 1** Despite Region C's size, growth, and economic impact, it accounts for **less than 10%** of the state's annual water consumption!

Region C has **26%** of the state population, producing **30%** of its economic output. Due to state-leading efforts in conservation and reuse, Region C is doing its part to make Texas water last!



**Region C produces  
30% of Texas' GDP**

**but uses less than  
10% of its water**



**Fact 2** Regions C and D have something in common—**gallons of water per capita daily (gpcd)**.

In 2021, Region C's per capita water use was **135 gallons daily** – far less than in years past. By comparison, 2021 water use in the region just to our northeast, Region D, was **132 gpcd—virtually the same!**

**Region C**

average

**135 gallons  
daily**



**Region D**

average

**132 gallons  
daily**

**Fact 3** In the draft 2026 Plan, **33% of Region C's total 2080 water supplies and 45% of all new water supplies** will come from water conservation and reuse.

**By 2080**

**45% of all new water  
supplies come from water  
conservation and reuse**

**Fact 4** Factoring in all water conservation and reuse strategies in Region C's plan, region-wide municipal per capita water use **falls to 95 gpcd by 2080.**

**By 2080**

**95 gpcd  
municipal water use**



# The Timeline

Initially Prepared Plan (IPP)  
due to the Texas Water  
Development Board (TWDB)

Public Hearing on  
Region C's IPP

Public comment  
deadline on  
Region C's plan

Final Regional Water  
Plan due to TWDB

TWDB develops and delivers  
2027 State Water Plan to  
Texas Legislature

March 3, 2025

May 19, 2025

July 18, 2025

October 20, 2025

2026

## Now is the time for North Central Texans to speak up.

*Help us ensure your future water supplies.*

Texas leaders need to hear from you! Texas water is for all Texans. Use one of the following four ways to provide input on Region C's Initially Prepared Plan (IPP).

- 1 Share** comments in person at the **May 19 public hearing**
- 2 Write** them online at [regioncwater.org/public-comment](https://regioncwater.org/public-comment)
- 3 Send** them via email to [info@regioncwater.org](mailto:info@regioncwater.org)
- 4 Mail** them to:  
J. Kevin Ward, RCWPG Administrator  
c/o Trinity River Authority  
P.O. Box 60  
Arlington, Texas 76004

**All public comments  
are due by 5 p.m.  
on July 18, 2025**

**REGION C**  
Water Planning for North Texas

[RegionCWater.org](https://RegionCWater.org)

Copyright © 2025, Region C Water Planning Group

